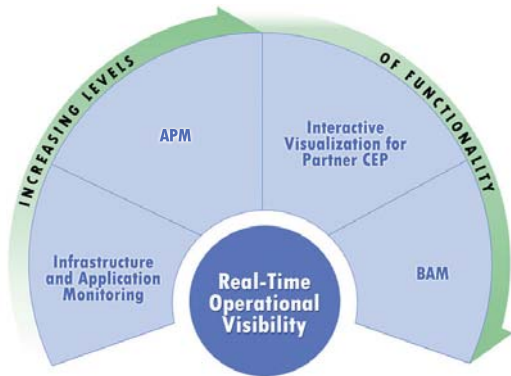




RTView™

The problem is simple. Companies need to ensure that operational issues are visible and addressed before they turn into costly problems. But providing meaningful, actionable visibility into business applications isn't easy. Given the amount of information that is generated on a daily basis out of numerous and varied systems, companies are struggling to aggregate and present that information in a way that helps decision makers rapidly analyze business conditions and make decisions in a volatile environment.



RTView enables rapid deployment of a range of real-time visibility solutions that can be scaled as business needs evolve.

Many companies have tried some form of Business Intelligence tool, but found they could not aggregate and analyze the information in real-time, nor compare real-time data with historical data to see where the exceptions lie. Others have looked into traditional Business Activity Monitoring solutions but concluded that they were too intrusive and cumbersome, and forced a preconceived notion of how their information should be visualized. Still others have attempted to build a visibility solution on their own, only to find that the diversion of development resources and the ongoing application maintenance to be too costly, and the solution to be ultimately too risky.

A Real-Time Visibility Solution That Works, and Is Easy-to-Use and Deploy

SL Corporation has spent the past 24 years helping companies gain meaningful visibility into their most critical applications and operations. The knowledge that SL has developed over thousands of successful customer deployments has resulted in the most effective and pragmatic solution for addressing a company's operational visibility challenges – RTView™.

RTView is an adaptable yet easy-to-use platform for the custom aggregation, analysis, and presentation of real-time information. It is the only solution to provide meaningful visibility across operations through the easy creation of custom dashboards, alerts, and reports based on real-time and historical data from virtually any data source.

RTView is used to overcome a wide variety of visibility challenges, including:

- *JMX-enabled Infrastructure and Application Management*
- *TIBCO Infrastructure Monitoring*
- *Business Activity Monitoring (BAM) Dashboards*
- *eCommerce Application Management*
- *Analysis of Adherence to Service Level Agreements*
- *Analysis of Usage for Capacity Planning and Chargebacks*
- *Trading Floor Applications*

EXECUTIVE SUMMARY

Why RTView?

- Respond more quickly and effectively to emerging conditions
- Build customized, real-time analytics and visibility solutions – including dashboards, alerts, and reports – with minimal programming
- Use a single platform to monitor your heterogeneous data environment
- Leverage the overview/drill-down capabilities to gain a deeper understanding of an issue
- Deploy quickly through a variety of existing environments
- Compare real-time data against historical trend/baseline/KPI data



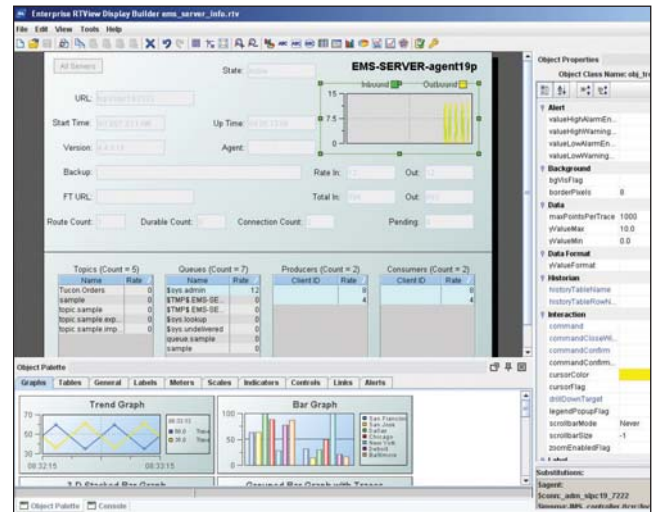
The Most Customizable and Easy-to-Use Solution

With RTView, you can not only show results quickly through pre-configured dashboards, analytics, alerts, and reports, but also modify and customize “everything” to deliver custom solutions. Solution components that are readily customizable include:

- Branding and ‘look & feel’ of dashboards
- Dashboard graphical objects/presentation of data
- Data navigation and drill-down through dashboards
- Alerts and alarms
- Analytic functions
- Commands and actions
- Data source adapters
- Integration of existing security systems
- Deployment environments
- Report formats

Modification and customization require minimal programming, raising both the productivity of power users, and the level of self-service of non-technical users. RTView’s Builder provides an easy-to-use interface for creating and modifying custom dashboards and reports. Users can quickly create customized views – or add/edit graphical objects – using the extensive palette of dynamic graphical objects including meters, gauges, tables, graphs and scales. Simply click on an object in the palette, drop it into the Builder, and you’re off and running. A properties box appears, enabling you to connect the object to live data and define its properties – including thresholds and alerts, security configuration, navigation, and drill-downs.

With such an adaptable yet easy-to-use platform, you can rapidly prototype, modify and deploy dashboards, iterating as you go to achieve the best visibility solution for your company’s needs.



The Builder is used to create meaningful visibility across your business operations. Select objects from the Object Palette and specify properties and data connections from an Object Property dialog box.

Built to Handle Real-Time Information

The access, analytics, federation, and visualization of data within RTView are all built from the ground up to handle real-time information efficiently, with minimal impact on your architecture design and performance.

Involve All Necessary Data

RTView can access and manage data from virtually any source through out-of-the-box and custom adapters, with minimal impact on existing applications. Out-of-the-box adapters include:

- Real-time messaging systems (TIBCO, IBM MQ, and any JMS)
- XML
- JMX
- CEP and event streams
- Splunk
- RRD
- WMI
- Relational databases (Oracle, SQL Server, DB2, Informix, etc.)
- OS/soft PI
- Microsoft Excel
- OLAP
- SNMP
- Log4J



Drill Down – or Up – for Complete Visibility

Truly understanding an issue requires that you have visibility not just to high-level metrics, but also to the detailed operational data that drives your summary views. RTView is unique in that it allows you to view an unlimited hierarchy of data, which enables you to understand, at a glance, the current state of operations, with the ability to drill down into areas that might require further exploration.

Enable Rapid Response to Emerging Conditions via Advanced Alerting Capabilities

RTView provides a persistent alert engine that continuously keeps tabs on the monitored data and notifies appropriate personnel when a threshold has been exceeded or an exception raised, regardless of whether or not anyone is viewing the dashboards. The alert engine can send an email, system command, or UNIX shell command; deliver a visual or audio alert; perform an automated response; set an SNMP trap; or prompt numerous other actions in order to ensure the fastest response.

Compare Real-Time to Historical Data via the RTView Historian

While the ability to understand and act on real-time conditions helps companies address issues early-on, RTView can also deliver strategic information to users in the form of KPI's and trend data. RTView's Historian can store information to any archival database, which can be displayed in the dashboards as KPI's and compared to live data for trend analysis, baseline plotting, or comparison to other metrics.

Flexible Deployment Options Fit Your Current Environment

RTView solutions can be deployed quickly and easily into your existing environment. No specialized server software or complex platform architecture is required. Deploy your dashboards as:

- *Standalone Java applications or compact Java applets*
- *An interactive AJAX thin client*
- *A portlet in your company's enterprise portal*
- *A Java panel embedded in an application*

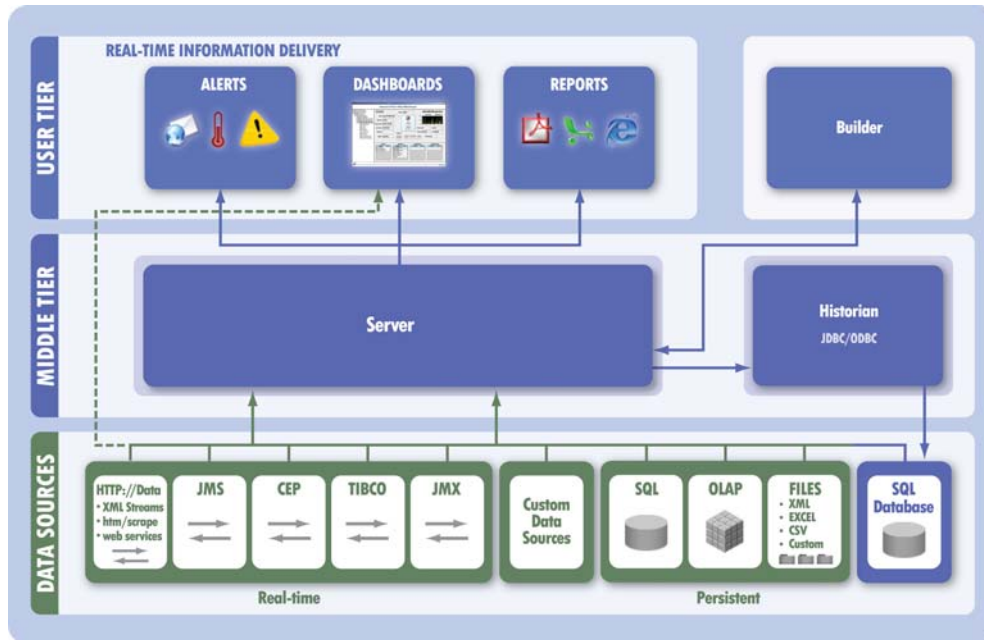
RTView offers role-based security as part of its deployment options. You define who sees what data or dashboards, and the associated actions they can perform, based on the user's role. RTView security is also customizable, allowing you to establish security credentials based on existing LDAP or database security definitions.

SL Corporation: Committed to Your Success

The team at SL has a reputation for being one of the most responsive and knowledgeable companies in the industry. Our customers and partners regularly comment on our great communications, the quick response of our technical team, and the commitment of the executives and lead technologists to ensure the success of all SL projects.

In addition, in-depth, hands-on training is available to facilitate the transfer of expertise from the SL technical team to your organization. Professional services are also optionally available to help you define a strategy for achieving your operational visibility objectives, and deliver any advanced customization that might be required to ensure the solution meets those objectives.





RTView enables rapid deployment of dashboards, reports, and alerts, and connects to virtually any enterprise data source.

About SL Corporation

Over the past 24 years, SL Corporation has become the most knowledgeable and responsive provider of real-time monitoring, analytics, and visibility solutions. SL's flagship product, RTView, addresses a broad spectrum of enterprise visibility challenges spanning application performance management (APM), business activity monitoring (BAM), and component-level infrastructure monitoring. RTView has also become the de facto standard for extending the visualization of complex event processing (CEP) engines, TIBCO messaging middleware, Oracle Coherence data grids, and custom applications. SL's exclusive focus on real-time visibility solutions, commitment to customer success, and partner-centric culture are why thousands of industry leaders have chosen to work with SL to support their most critical applications and businesses. SL Corporation can be reached at +1 415-927-8400 or on the web at www.sl.com.

FOR MORE INFORMATION, A LIVE DEMONSTRATION, OR AN EVALUATION COPY OF RTVIEW, PLEASE CONTACT SL CORPORATION AT 415-927-8400 OR VISIT US AT WWW.SL.COM.