



Press Release

NTT-AT selects SL's Java GUI technology for the new "TNMS Engine" OSS(*1) Development Platform

(*1) Operation Support System

Okinawa, Japan (APNOMS 2005) - September 28, 2005 - NTT Advanced Technology Corporation (NTT-AT) and SL Japan Corporation (SL) today announced that SL-GMS J/Net and Enterprise RTView have been selected for NTT-AT's new "TNMS Engine" OSS Development Platform product. NTT-AT, an NTT Group company, is a leading technology integrator for the telecommunications industry, and SL is a leading provider of software solutions for the monitoring and display of real-time information.

The new "TNMS Engine" using the SL-GMS Java GUI, enables non-programmer service providers to develop and deploy a scalable OSS from NOC to back-office Web access, easily and in a shorter time frame to meet today's needs to rapidly deploy new network services. Together with the flexibility of the new TNMS Engine to react quickly to network service changes, TCO of OSS can be reduced.

TNMS Engine is an OSS Development Platform comprised of integrated tools to support from design to testing, and an OSS compliant to TMN standard defined by ITU-T can be developed with less development efforts. It has been deployed by many enterprises including telecom carriers for various network operation management including ATM, SDH/Sonet, Optical and IP networks. However, the major feature of the former "TNMS Engine" product was its powerful protocol engine which had no HMI development feature. Also, its protocol process description required C++ programming expertise.

The new TNMS Engine is now enhanced by integrating it with SL-GMS J/Net and Enterprise RTView to provide easy-to-use HMI development functionality for flexible and quick development of high performance displays, from Web clients to Rich clients. Leveraging Enterprise RTView's Display Builder, the new HMI development environment basically does not require programming. The new TNMS Engine's objective is to be "easy to-use and to-develop for non-programmers" and the protocol process is now made in Java and UML to enable most implementation without programming.

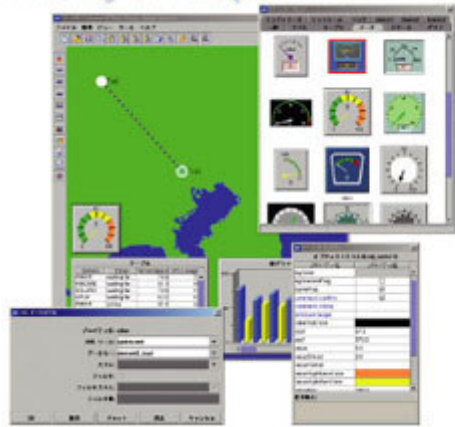
SL-GMS J/Net is a leading Java network management GUI development tool, and Enterprise RTView is a real time dashboard that provides a builder to configure and view network operation displays connected to multiple data sources such as SQL, XML and JMS(*2) without programming. These products feature outstanding compactness and performance, having based on SL's over 20 years of experience developing state-of-the-art graphic drawing and code generation technologies.

(*2) Java Message Service

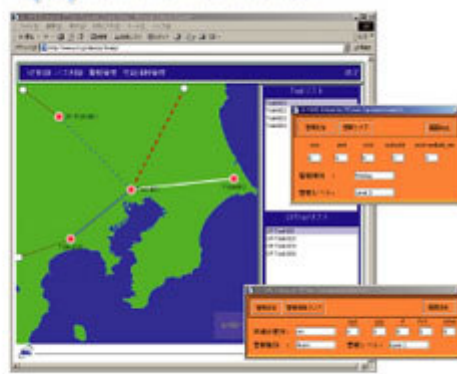
With this new HMI development tool, existing "TNMS Engine" users can also rapidly develop various and customizable real time dynamic displays such as network views on geographic maps, network equipment status, performance management graphs and alarm tables. Additionally, OSS dashboard displays configured by Enterprise RTView can be deployed immediately via Web browser or enterprise portal. The new HMI development feature provides an integrated Web interface for OSS based on the TNMS Engine, to view not only network monitoring displays but also to view the related information such as service management in real time, with corresponding metrics in the same dashboard.

The new TNMS Engine is now enhanced by integrating it with SL-GMS J/Net and Enterprise RTView to provide easy-to-use HMI development functionality for flexible and quick development of high performance displays, from Web clients to Rich clients.

TNMS Engine in Enterprise RTView



Deployment in a Web Browser



About NTT Advanced Technology Corporation:

Since its foundation in 1976 as a subsidiary of NTT, NTT Advanced Technology Corporation (NTT-AT) with its close links with NTT Laboratories has been successfully transferring the technology to business by close alliances with various high-tech companies from around the globe. NTT-AT as "Technology Integrator" offers leading-edge technologies, network & system solutions and research & consulting services, providing the best solutions that meets customer's requirements in the wide areas from broadband network systems, nanotechnology to intellectual properties. URL <http://www.ntt-at.co.jp>.

About SL Corporation:

SL (Sherrill-Lubinski) Corporation was founded in 1983 and is a leading provider of software solutions for the monitoring and display of real-time information. Over 70,000 (as of 2005) SL products have been licensed worldwide, for mission-critical applications by market leaders throughout the telecommunications, process manufacturing, energy/utilities, financial services, transportation and defense/aerospace industries. Global customer implementations include ABB, Alcatel, Agilent, CalTrans, Hewlett-Packard, NASA and Toshiba. SL Japan Corporation is a Japan subsidiary of SL Corporation founded in 1998. URL www.sl.com

Product and company names mentioned herein are trademarks and/or registered trademarks of their respective owners.

Contacts:

SL Corporation: **Brad Rollin** brad.rollin@sl.com

SL Japan Corporation: **Yoshie Hashima** publicity@sl-j.co.jp

NTT Advanced Technology:

TNMS Engine, Operation Support System Business Unit-1, Access Networks Business Headquarters tnms@trans.ntt-at.co.jp.