



Persist “The Power Of Now”

*5 Reasons You Need History
to Ensure the Performance of Your
TIBCO-Based Applications*

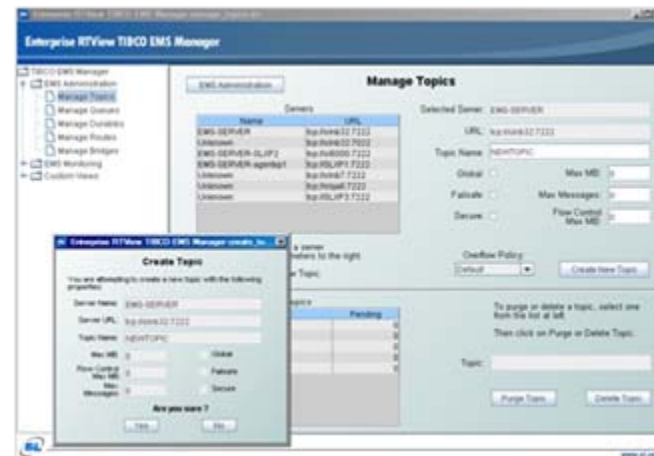
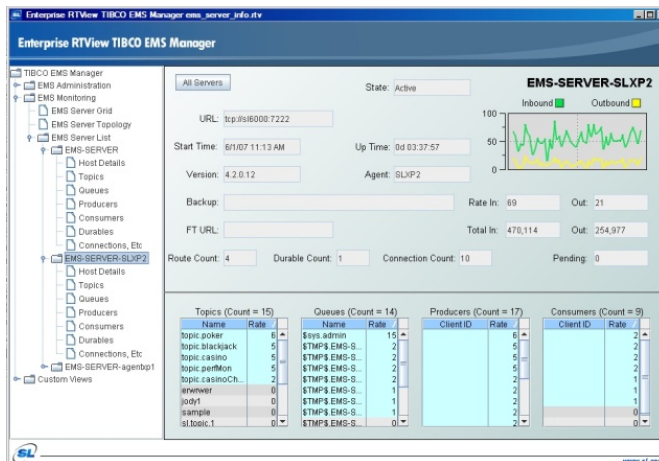
June 2010





■ SL Corporation and TIBCO Relationship

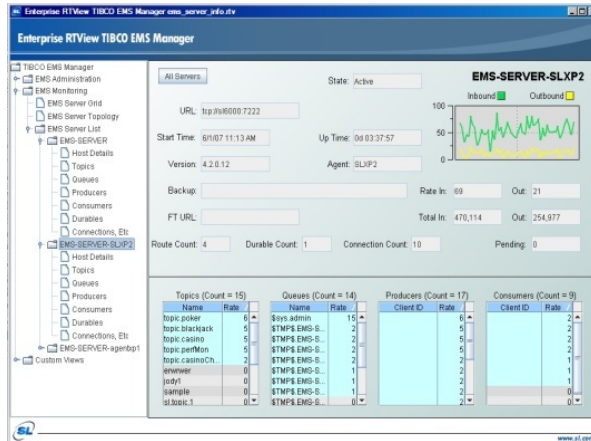
- SL has been a TIBCO alliance partner since 2002
- SL RTView was added to the TIBCO price list in April 2005
- A TIBCO-branded version of RTView was introduced in June 2005





Middleware Monitoring for TIBCO users

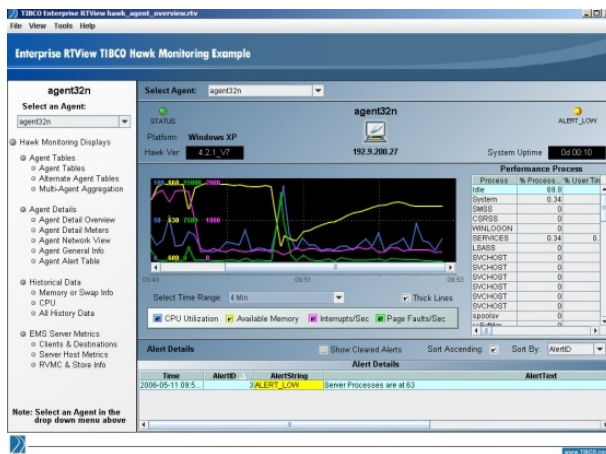
EMS Manager



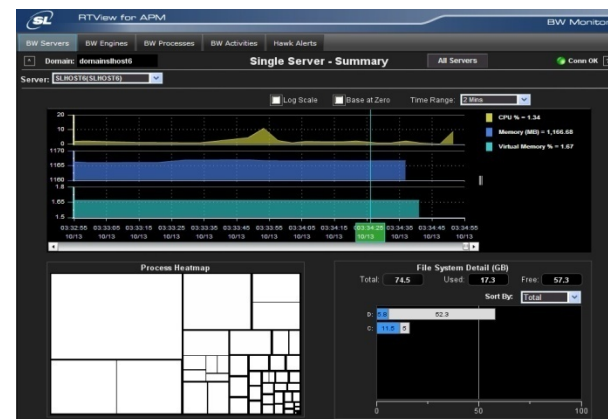
Rendezvous Monitor



Hawk Monitor



RTView for APM | BW Monitor

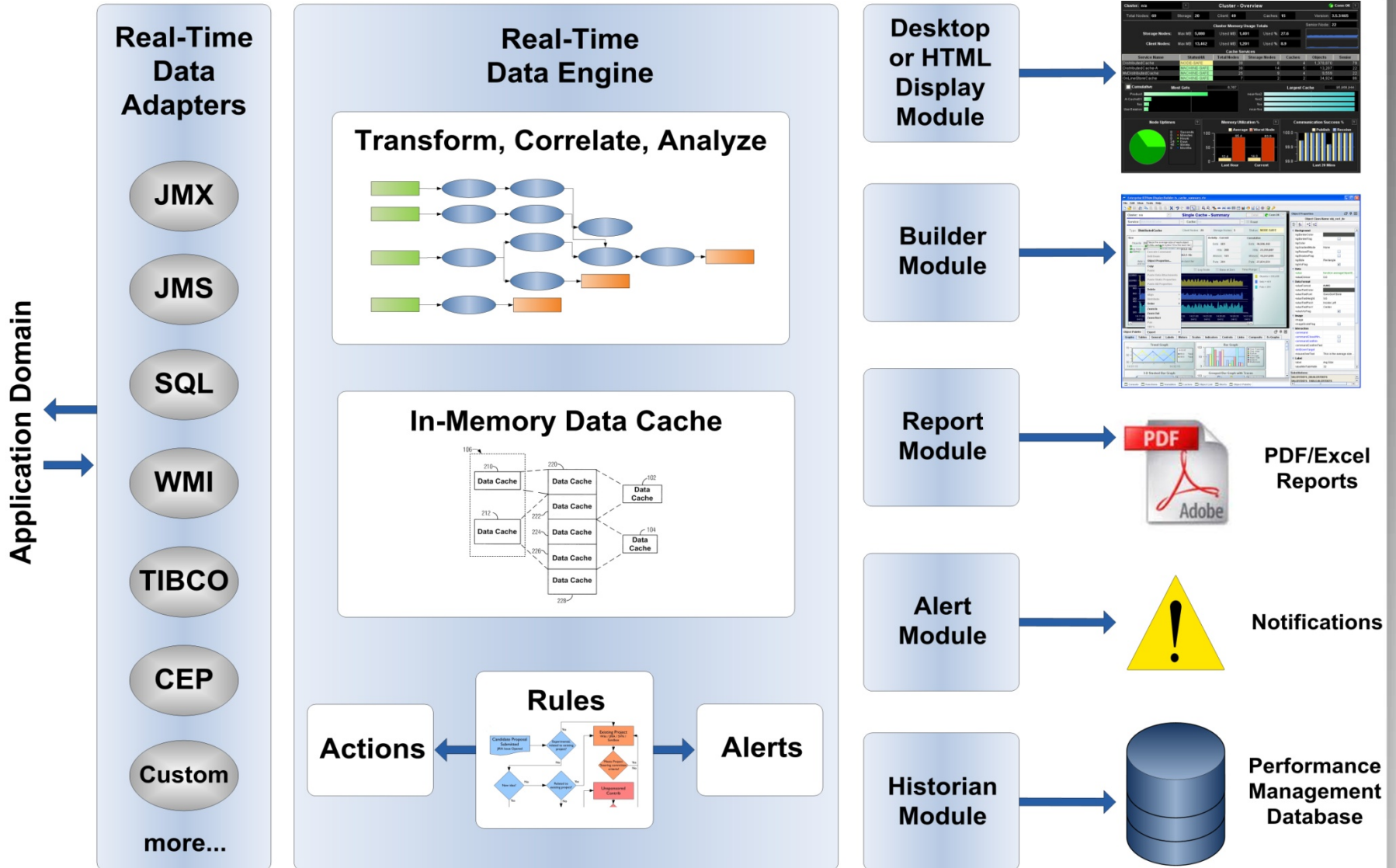




■ Partial TIBCO RTView Customer List

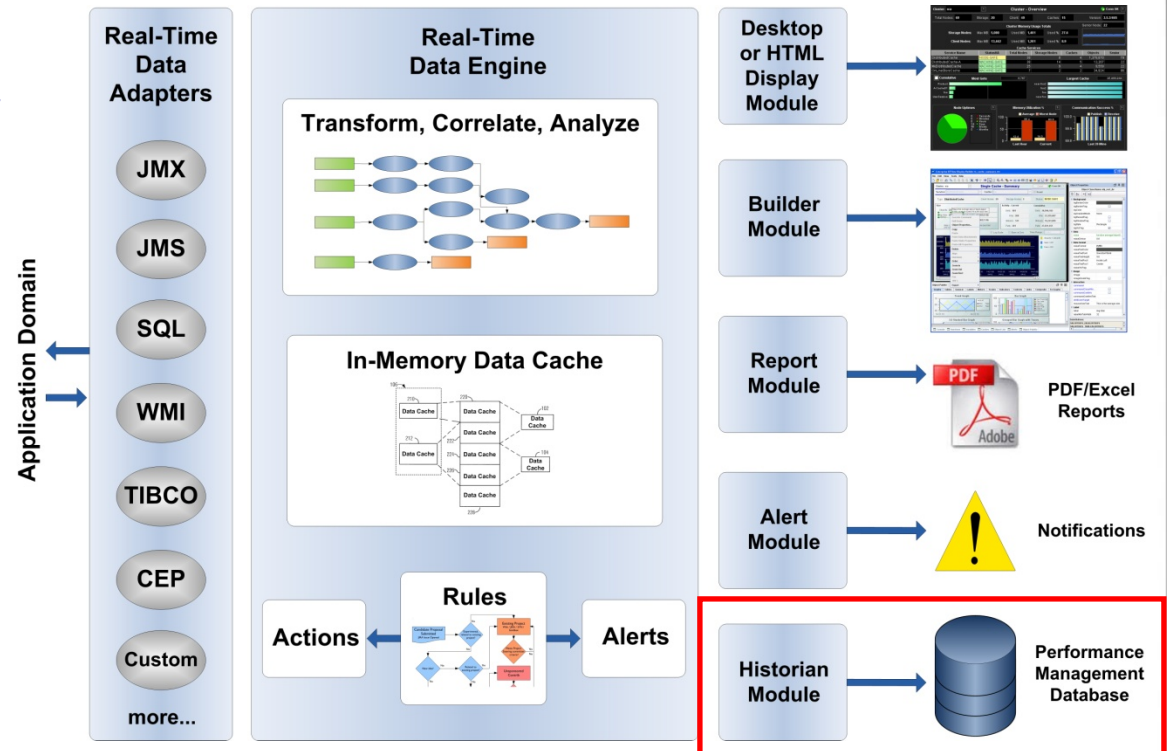
- A.G. Edwards
- Agilent
- Allstate Insurance
- Amgen
- AT&T
- Banco Azteca
- Bank of America
- Carphone Warehouse
- Citigroup National
- Citigroup Global Markets
- CLSA Limited
- CompuCredit
- CSPI Korea
- Delta Technology
- Deutsche Bank
- Dimension Data
- Elcoteq
- Fujitsu Siemens
- Grupo Elektra
- H&R Block
- Harrahs
- Intuit
- J.C. Penny
- Laureate Education
- Lehman
- LexisNexis
- Merial
- Mobilkom Austria
- New York ISO
- New York Power Authority
- OfficeMax
- OOCL
- OSLO Stock Exchange
- OTA Management
- PIT Telecommunications Indonesia
- R.L. Polk
- Payless Shoes Source Worldwide
- Pepsi
- Pirelli
- Prysmian
- R + L Carriers
- Royal Bank of Scotland
- SAC Capital Advisors
- Seagate
- SI Mobil
- Smart & Final
- Southwest Airlines
- SUN International
- Telecom Italia
- T-Mobile
- Telstra
- Tennessee Valley Authority
- Two Sigma
- UBS
- VIPnet
- Wachovia
- Wells Fargo

RTView for APM Architecture



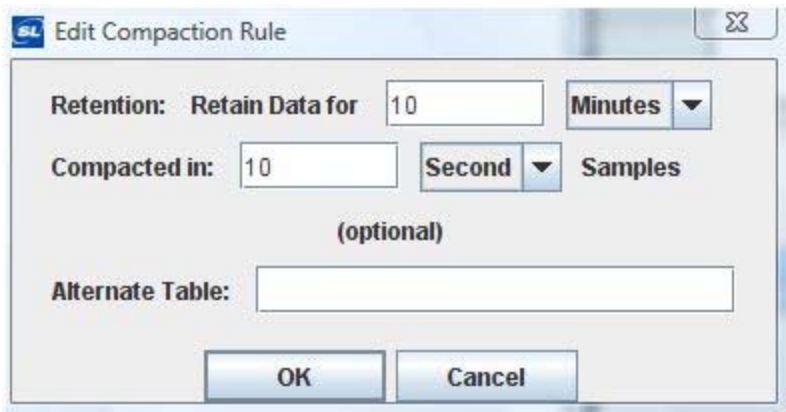
RTView Historian

- RTView Historian is a server process
- Persists data to any SQL database
- Historical data can be accessed as a data source to combine with real-time data for analysis and contextual presentation
- Compatible with any RDBMS (Oracle, SQL Server, Sybase, DB2, etc)



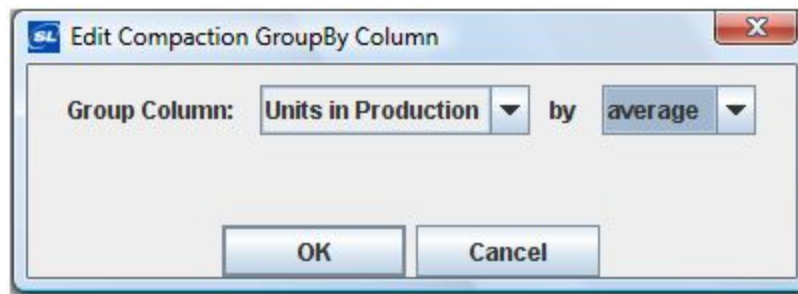
RTView Historian Data Compaction

- Write Rules to manage history



The 'Edit Compaction Rule' dialog box contains the following fields and controls:

- Retention:** Retain Data for **Minutes** (dropdown)
- Compacted in:** **Second** (dropdown) **Samples**
- (optional)**
- Alternate Table:**
- OK** and **Cancel** buttons

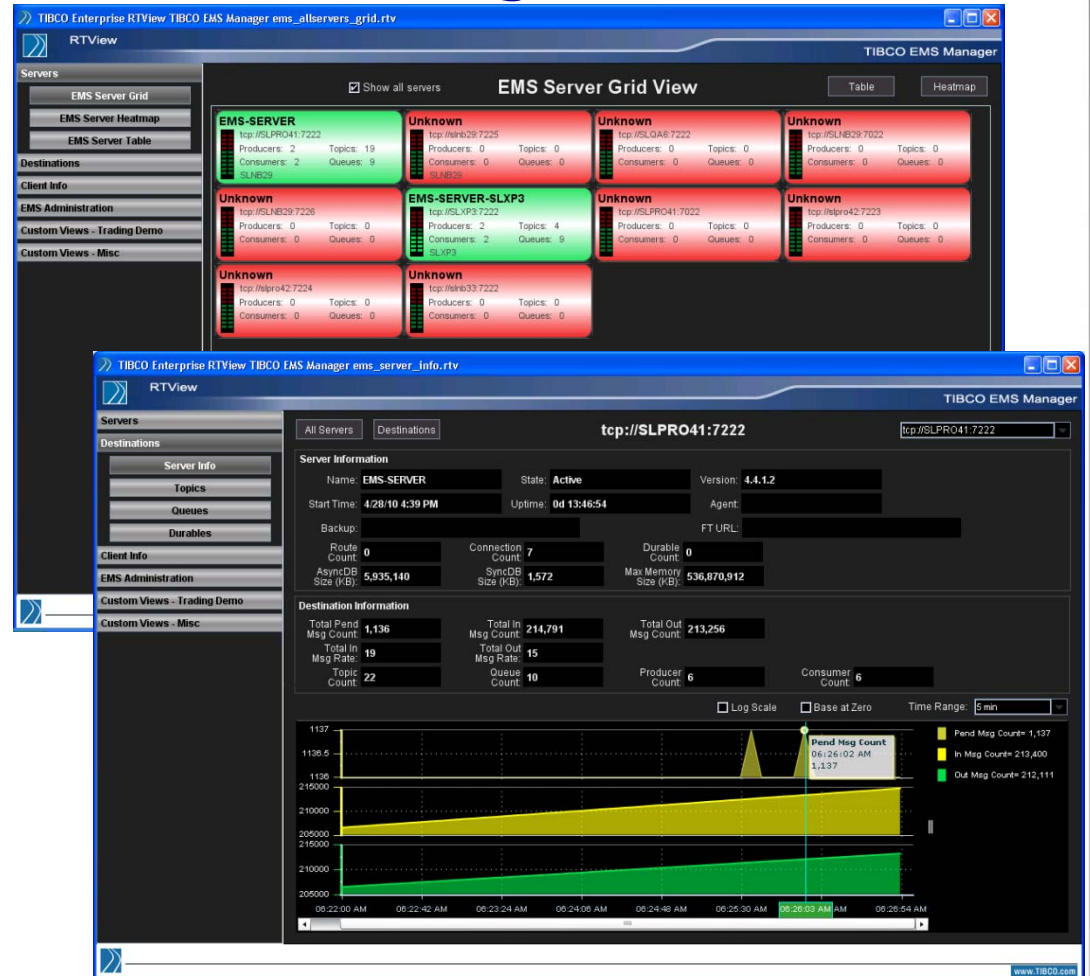


The 'Edit Compaction GroupBy Column' dialog box contains the following fields and controls:

- Group Column:** **Units in Production** (dropdown) **by** **average** (dropdown)
- OK** and **Cancel** buttons

RTView for TIBCO – EMS Manager

- An out-of-the-box application that is easy to configure, maintain and customize
- Provides views and of platform, server, transaction and message-level status
- Enables TIBCO EMS administrators to monitor their EMS installation to ensure it is operating optimally



■ 5 Reasons You Need History to Monitor EMS

■ Provisioning and Capacity Planning

- Little information available
- Understand peak usage periods and levels

■ 5 Reasons You Need History to Monitor EMS

■ Provisioning and Capacity Planning

■ Chargebacks

- Often don't have statistics from an application perspective
- Understanding where resources are being used facilitates better business decisions

■ 5 Reasons You Need History to Monitor EMS

- **Provisioning and Capacity Planning**
- **Chargebacks**
- **Performance Optimization**
 - Often vague whether it's even necessary to look at performance optimization
 - Understand when the system is in stressful conditions

■ 5 Reasons You Need History to Monitor EMS

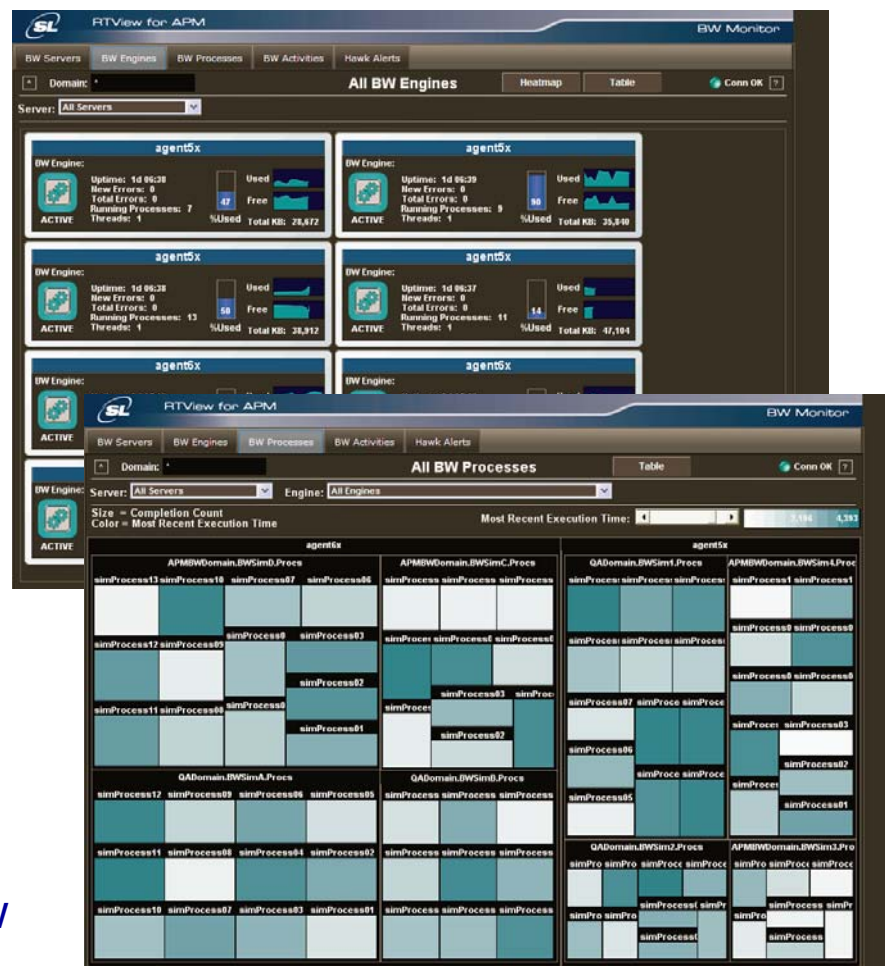
- **Provisioning and Capacity Planning**
- **Chargebacks**
- **Performance Optimization**
- **Trusted Alerts**
 - Hard limits for alerts creates too many false positives
 - Get trusted alerts on deltas based on actual behavior

■ 5 Reasons You Need History to Monitor EMS

- **Provisioning and Capacity Planning**
- **Chargebacks**
- **Performance Optimization**
- **Trusted Alerts**
- **Failure Correlation and Analysis**
 - Complex distributed applications very difficult to troubleshoot
 - Deep analysis across all metrics/servers in one centralized view is key to rapid resolution

RTView for APM | BW Monitor

- Dramatically speed identification and resolution of BusinessWorks issues by having immediate access to operational information
- Discover issues by observing real-time and historical throughput, and response times across multiple BW engines, servers, processes and activities in a single view
- Quickly look back to see when and where issues started – the BW monitor provides a centralized view of BW metrics over user-defined time intervals



■ 5 Reasons You Need History to Monitor BW

■ BW Engine Lifecycle Management

- Difficult to understand usage with multiple consumers of services provided by each BW engine
- Historical metrics of usage patterns signals possible decommissioning

■ 5 Reasons You Need History to Monitor BW

- **BW Engine Lifecycle Management**
- **Provisioning and Capacity Planning**
 - Difficult to determine how much memory to allocate for the JVM
 - Historical information re: engine memory usage vs. allocated memory aids provisioning and capacity planning

■ 5 Reasons You Need History to Monitor BW

- **BW Engine Lifecycle Management**
- **Provisioning and Capacity Planning**
- **Performance Optimization**
 - Difficult to understand when there have been performance degradations and where issues started
 - Historical information key to making the right decision to resolve a degradation

- ## ■ 5 Reasons You Need History to Monitor BW
- **BW Engine Lifecycle Management**
 - **Provisioning and Capacity Planning**
 - **Performance Optimization**
 - **Trusted Alerts**
 - Fixed thresholds make it difficult to track performance times
 - Understand performance by comparing real-time data to a “normal” time-based bandwidth

■ 5 Reasons You Need History to Monitor BW

- **BW Engine Lifecycle Management**
- **Provisioning and Capacity Planning**
- **Performance Optimization**
- **Trusted Alerts**
- **Failure Correlation and Analysis**
 - Looking at log files and correlating the information is tedious, and too slow for troubleshooting
 - Historical views across multiple BW engines provides all information in a single console

■ Wrap Up

RTView provides EMS and BusinessWorks users with critical historical context to:

- Know when systems are operating under stressful conditions, and for how long
- Understand peak usage periods and levels in order to provide more accurate provisioning and capacity planning
- Understand what resources are being used/not used
- Provide trusted alerts based on more realistic behavior
- Correlate information across multiple EMS servers or BW engines
- Provide deep analysis and better problem resolution



To learn more about EMS Manager or
BW Monitor, please visit

www.sl.com

- or -

contact SL Corporation at

(415) 927-8400