

# SL-GMS Enterprise RTView® for NGOSS Component Monitoring

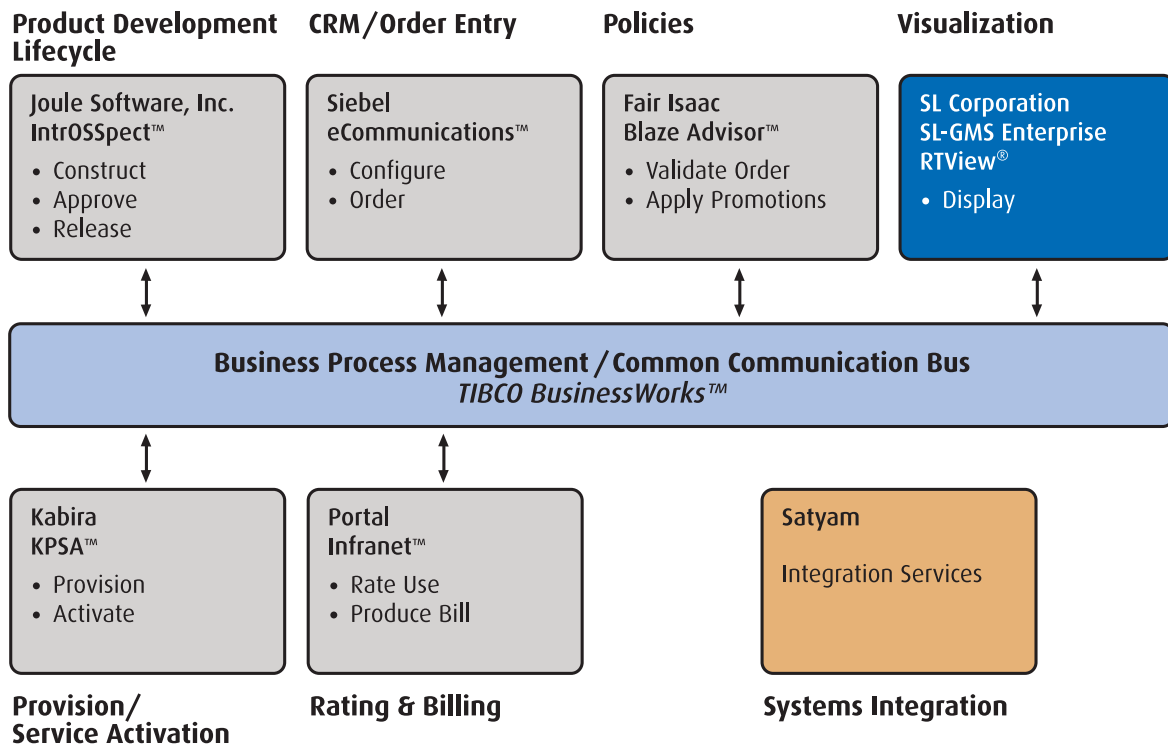
The Product Lifecycle Management Catalyst team has created a complete NGOSS integrated solution to demonstrate automation of the typical steps a Service Provider must perform to define and support new product offerings. These steps include the creation, approval, release, and maintenance of products. The automation of this product lifecycle management has been fully integrated with multiple product components to provide the real-time capability to distribute new product offerings, as well as order, fulfill and bill for new services.



## Product Lifecycle Management with NGOSS

In this NGOSS integration, SL-GMS Enterprise RTView was chosen by the PLM Catalyst group to visualize real-time business process flows, transaction status between the various components, and drill down views of key data contained in the transactions passed on the TIBCO BusinessWorks™ Communication Bus.

### PLM Catalyst Architecture



*OSS integration to automate product innovation, creation, delivery, maintenance and measurement processes*

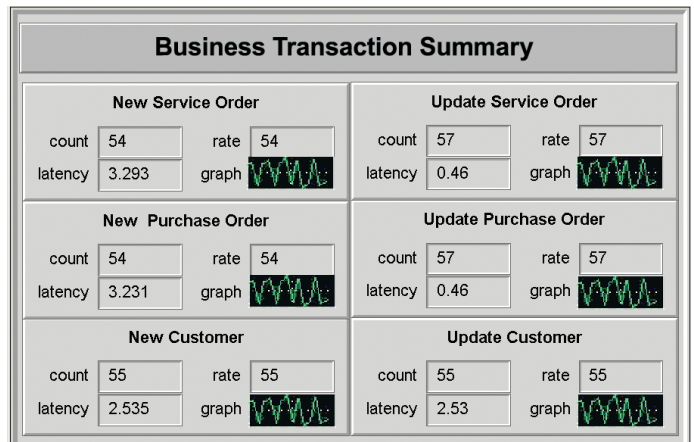
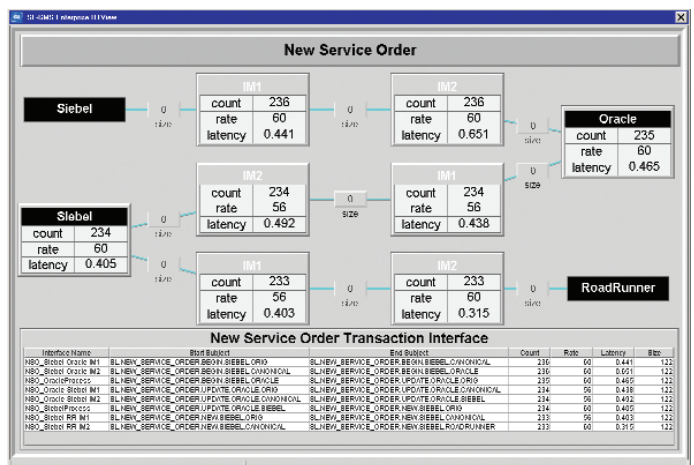
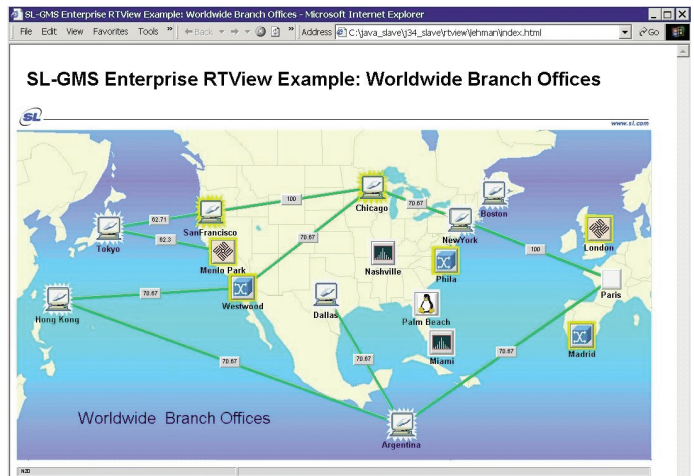


# SL-GMS Enterprise RTView® Value Proposition

With complex OSS integrations there is always the problem of verifying that a particular implementation is going to scale and operate properly. After implementation, there is the additional challenge to properly monitor the OSS and proactively detect system degradation before end users are affected.

Service providers are familiar with sophisticated tools and user interfaces to verify network integrity and quality of service, but do not have comparable solutions for monitoring the OSS as a whole. This is because OSS integrations have often implemented multiple products, databases, and EAI technologies to connect the various components necessary to perform a business process.

Enterprise RTView is an innovative, lightweight dashboard solution that provides the ability to access real-time and archived data from multiple data sources and EAI messaging infrastructures. Dashboards can be easily distributed throughout the enterprise via browsers or enterprise portals. Transaction flows for a particular business process can be automatically visualized and performance metrics (message count, rate, latency, etc.) are calculated for real-time presentation and stored in an historical database. Real-time information provides immediate warnings of critical situations, while historical information can be used to understand OSS load trends, comparative analysis, and post-mortem problem analysis.



Real-time OSS performance monitoring with Enterprise RTView



**SL Corporation®** 240 Tamal Vista Boulevard  
Corte Madera, CA 94925 USA  
415.927.8400 • 415.927.8401 fax  
www.sl.com



Dynamic Graphics for Real-Time Data Display